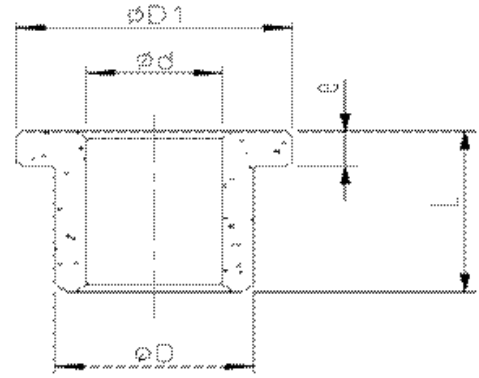


AM, AI, AW



AL, AJ (with flange)

Material
Chemical Component

Cu 54-56% Sn 4-6% Fe 39-41%

Physical and Mechanical Performance

Oil content (%)

≥18%

Oil density (g/cm³)

6.2-6.8

Crushing strength (N/mm²)

>150

Surface hardness (HB)

25-55

HMEC Type no.

Dimension

d

D

L

D1

e

AM 202416

20

+0.034
+0.006

24

+0.066
+0.035

16

±0.135

AM 202420

20

+0.034
+0.006

24

+0.066
+0.035

20

±0.165

AM 202425

20

+0.034
+0.006

24

+0.066
+0.035

25

±0.165

AM 101310

10

+0.034
+0.006

13

+0.066
+0.035

10

±0.11

AM 101316

10

+0.034
+0.006

13

+0.066
+0.035

16

±0.135

AM 121512

12

+0.034
+0.006

15

+0.066
+0.035

12

±0.135

AM 182530

18

+0.034
+0.006

25

+0.066
+0.035

30

±0.165

AM 040706

4

+0.016
+0.000

7

+0.048
+0.023

6

±0.09

AM 040804

4

+0.016
+0.000

8

+0.048
+0.023

4

±0.09

AM 050810

5

+0.016
+0.000

8

+0.048
+0.023

10

±0.11

AM 050805

5

+0.016
+0.000

8

+0.048
+0.023

5

±0.09

AM 607250

60

+0.07
+0.01

72

+0.089
+0.019

50

±0.195

AM 607270

60

+0.07
+0.01

72

+0.089
+0.019

70

±0.23

AM 607050

60

+0.07
+0.01

72

+0.089
+0.019

50

±0.195

AM 405030

40

+0.044
+0.009

50

+0.068
+0.013

30

±0.165

AM 405040

40

+0.044
+0.009

50

+0.068
+0.013

40

±0.165

AM 405050

40

+0.044
+0.009

50

+0.068
+0.013

50

±0.195

AM 425250

42

+0.044
+0.009

52

+0.083
+0.023

50

±0.195

AM 455535

45

+0.044
+0.009

55

+0.083
+0.023

35

±0.165

AM 455545

45

+0.044
+0.009

55

+0.083
+0.023

45

±0.165

AM 505850

50

+0.054
+0.009

58

+0.083
+0.023

50

±0.195